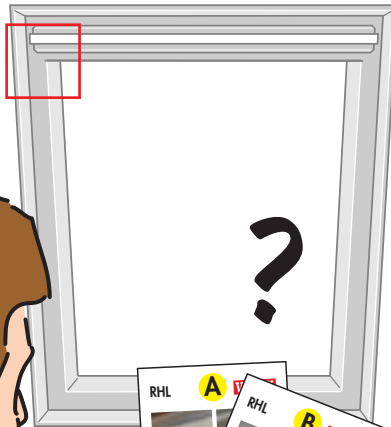
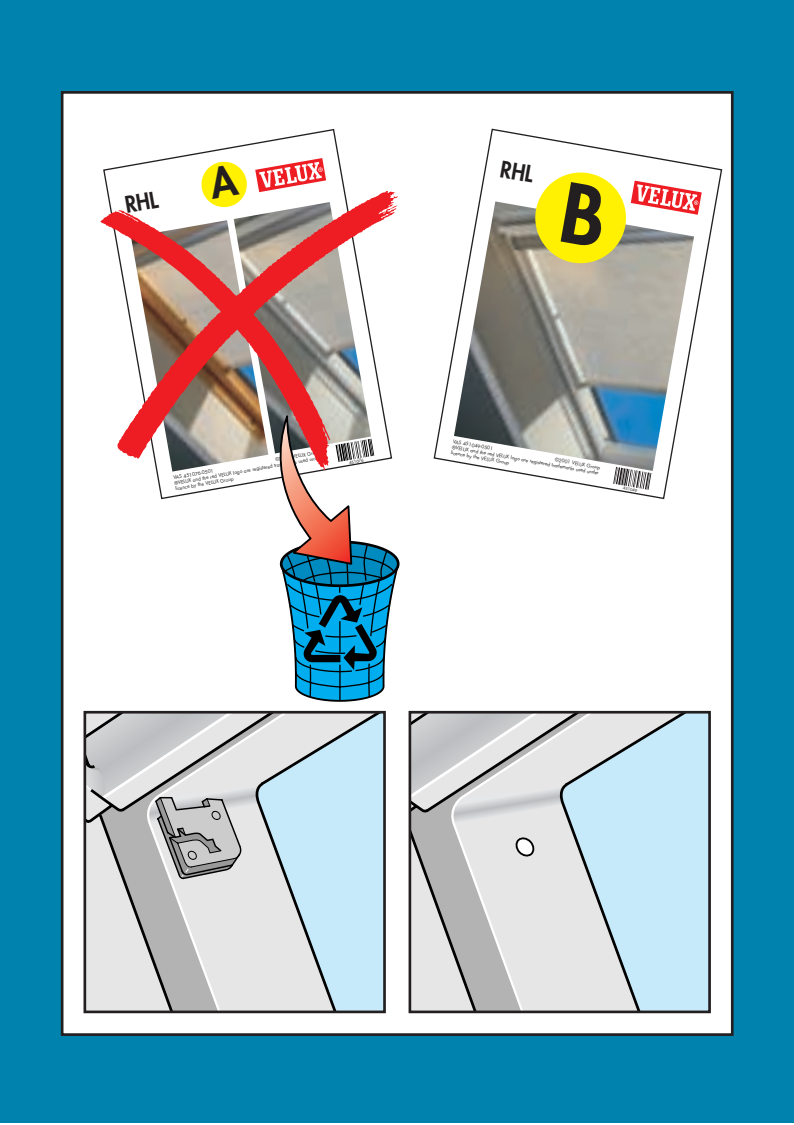




VELUX®





| | | | |
|------|--|------|---|
| A: | VELUX Österreich GmbH ☎ 02245/32 3 50 | IRL: | THE VELUX COMPANY LTD. ☎ (01) 848 8775 |
| AUS: | VELUX (AUSTRALIA) PTY. LTD. ☎ (02) 9550 3288 | J: | VELUX-JAPAN LTD. ☎ 03-3478-8141 |
| B: | VELUX Belgium ☎ (010) 42.09.09 | LT: | UAB VELUX STOGO LANGAI ☎ (8-22) 709101 |
| BG: | VELUX BULGARIA FOOD ☎ 02/955 99 30 | LV: | VELUX JUMTA LOGI SIA ☎ 75 48 993 |
| BiH: | VELUX KROVNI PROZORI d.o.o. ☎ 71 406 434/441 | N: | VELUX Norge AS ☎ 22 51 06 00 |
| CDN: | VELUX-CANADA INC. ☎ 1-800-88-VELUX (888-3589) | NL: | VELUX NEDERLAND B.V. ☎ 030 - 6 629 629 |
| CH: | VELUX (SCHWEIZ) AG ☎ 062/289 44 44 | NZ: | VELUX NEW ZEALAND LTD. ☎ 09-6344 126 |
| CHN: | VELUX (CHINA) CO., Ltd. ☎ 0316-607 27 27 | P: | VELUX A/S, Sucursal em Portugal ☎ 21 847 94 01 |
| CZ: | VELUX ČR, s r.o. ☎ (05) 45 21 42 50 | PL: | VELUX-POLSKA Sp. z o.o. ☎ (22) 559 60 00 |
| D: | VELUX Deutschland GmbH ☎ 0180-333 33 99 | RA: | VELUX ARGENTINA S.A. ☎ 0 114 711 5666 |
| DK: | VELUX Danmark A/S ☎ 45 16 45 16 | RCH: | VELUX CHILE LTDA. ☎ 231.18.24 |
| E: | VELUX Spain S.A. ☎ (91) 353 00 90 | RO: | VELUX FERESTRE DE MANSARDA ROMANIA s.r.l. ☎ 068 42 55 77 / 42 56 00 |
| EST: | VELUX EESTI OÜ ☎ (2) 601 10 46 | RUS: | VELUX ROSSIA ZAO ☎ (095) 737 75 20 |
| F: | VELUX-FRANCE ☎ 01.64.54.22.00 | S: | VELUX Svenska AB ☎ 042/144450 |
| FIN: | OY VELUX AB ☎ 09-887 0520 | SK: | VELUX SLOVENSKO, s r.o. ☎ (07) 6531 69 77 |
| GB: | THE VELUX COMPANY LTD. ☎ 01 592 778 250 | SLO: | VELUX SLOVENIJA d.o.o. ☎ 01 721 68 00 |
| H: | VELUX MAGYARORSZÁG ☎ (06/1) 436 05 20 | USA: | VELUX-AMERICA INC. ☎ 1-800-88-VELUX |
| HR: | VELUX HRVATSKA d.o.o. ☎ 01/622 12 12 | YU: | VELUX JUGOSLAVIJA d.o.o. ☎ 11 367 0468 |
| I: | VELUX-ITALIA S.p.A. ☎ 045/6173666 | ZA: | VELUX-SOUTH AFRICA (PTY) LTD. ☎ (011) 907 1806 |

www.VELUX.com

Installation instructions for RHL. Order no. VAS 451048-0501

©2001 VELUX Group
 ©VELUX and the red VELUX logo are registered trademarks used under licence by the VELUX Group